



# SIERRA VISTA

Luxury pool villas

Sri Sunthon-Bang Jo



# SIERRA VISTA

Luxury pool villas

Sri Sunthon-Bang Jo

# SIERRA VISTA

Sierra Vista Phuket is a charming residential haven nestled in the heart of Phuket, offering a perfect blend of tropical living and modern comfort. This development presents a collection of carefully designed villas, each embodying the essence of relaxed luxury against the backdrop of the island's lush surroundings. The villas at Sierra Vista boast contemporary architecture and tasteful interiors, creating inviting spaces for residents. Surrounded by tropical greenery, the project provides a serene and tranquil ambiance, allowing residents to escape into a private oasis in one of Thailand's most coveted destinations. Whether chosen as a primary residence or a vacation retreat, Sierra Vista Pool Villa Phuket offers residents a unique living experience in a tropical paradise. With its strategic location and a focus on combining aesthetics with comfort, this residential project aims to provide an idyllic retreat where residents can savor the tranquility and beauty

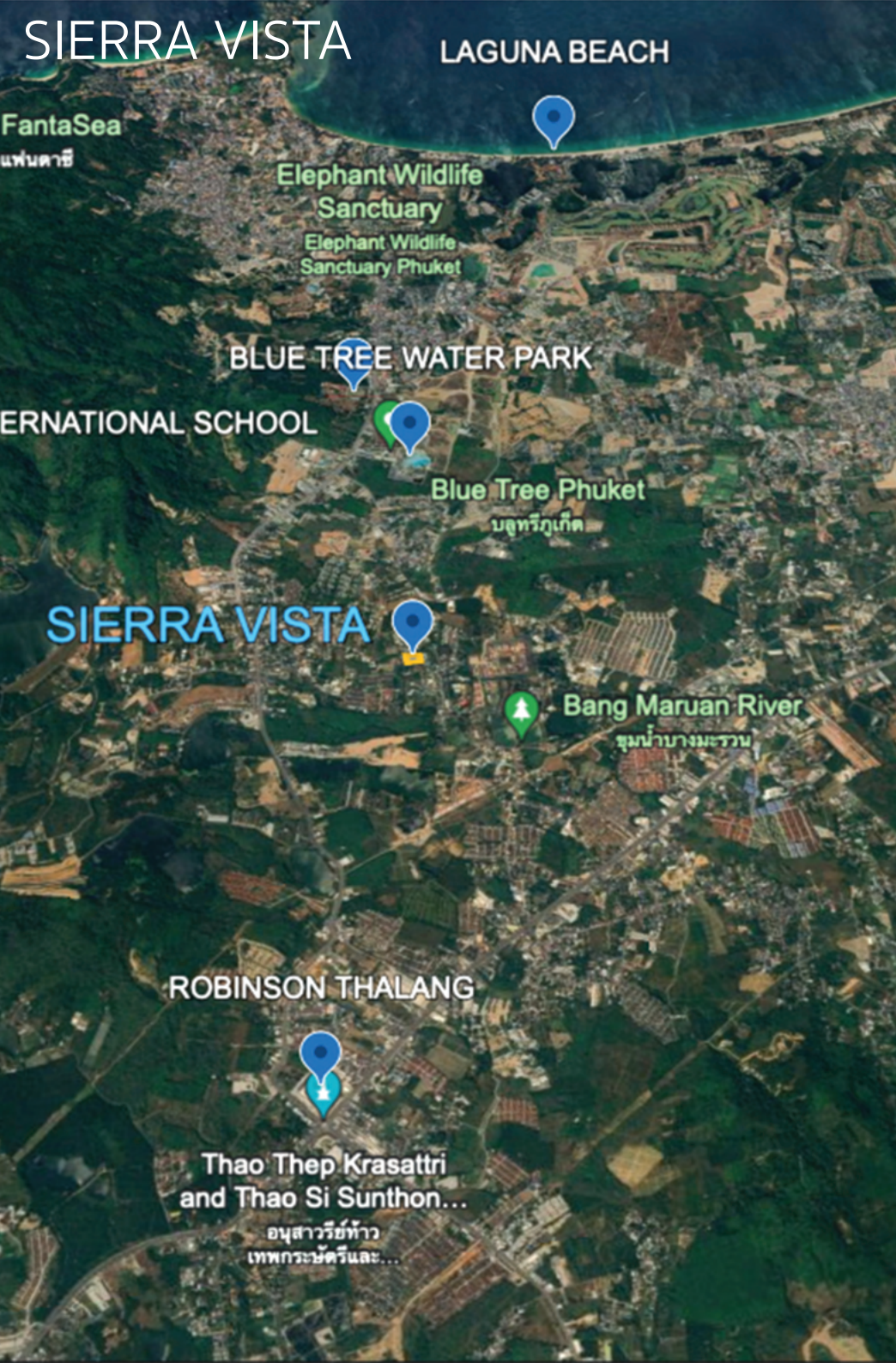


# Nearby Location

- 📍 5 min to Robinson Lifestyle Thalang
- 📍 5 min to BLUETREE Waterpark
- 📍 5 min to HeadStart International School, Phuket Cherngtalay Campus
- 📍 10 min to Porto de Phuket, VILLAMARKET & BOAT AVENUE
- 📍 15 min to LAGUNA PHUKET
- 📍 20 min to BANGTAO beach
- 📍 20 min to BOAT LAGOON & ROYAL PHUKET MARINA
- 📍 30 min to CENTRAL Phuket shopping mall
- 📍 30 min to Phuket International Airport





The Sierra Vista project in Phuket is a perfect escape from the chaos of city life, offering a peaceful serene and sustainable retreat in the heart of nature. With its eco-friendly features special interiors and luxurious amenities, this Villa is the perfect place to relax rejuvenate and create memories that will last for a lifetime.






# LOCATION




-  HeadStart International School, Phuket Chergtalay Campus  
2.3 KM.

 BLUE TREE WATER PARK  
2.3 KM.

 LAGUNA BEACH  
7.4 KM.
-  ROBINSON THALANG  
5.3 KM.

 Boat Avenue  
4.0 KM.

 PHUKET INTERNATIONAL AIRPORT  
20.0 KM.



## INTERIOR DESIGN CONCEPT

The Sierra Vista project focuses on designing the functionality of every space, allowing the residents to live their lives simply and perfectly, while still maintaining a distinctive design that reflects their personality in every perspective, along with innovations that help complete every moment of happiness to make it even more perfect.

We believe that designing functions that take into account the actual usage of the residents can better meet their lifestyle needs, so we have designed various functions and combined them with new innovations to make your lifestyle more convenient every day.

The common area is designed to accommodate a variety of activities very well, with a large space to accommodate every member of the family.

The private bedroom clearly separates privacy, and the design and amenities in the bedroom are like a 5-star hotel.

More happiness with a perfect life in a tropical modern luxury style Bathrooms are designed and selected with quality and practical sanitary ware that has a long service life, combined with a distinctive and beautiful design.



With meticulous attention to detail, sierra vista ensures that our customer will be impressed by the hidden beauty, along with the outstanding design that reflects individuality and the selection of the finest materials for customer's utmost satisfaction. Every detail is meticulously detailed, including the exquisite decoration, which indicates the superior taste of every generation.

# SIERRA VISTA

## SIERRA VISTA PROJECT INFORMATION

Project Name : Sierra Vista

Developer : Boonsiri Asset Co.,Ltd

Project Start : March 2024

Total Land Area : 1540 SQM

Number of Unit : 7 Unit

Villa Type : Two Types, 4 Bedrooms Villas

Price Range : 18.9-20.9 Million Thai Baht

Location : Si Sunthon, Thalang District, Phuket





## CONCEPT OF THE VILLAS

- Designed in Modern Tropical pool villa style.
- Reasonable price, It is an analysis of house prices that are appropriate for investors who will get a high return from rentals if the house prices are not too high compared to other projects.
- Designed for real living. Consideration is given to ventilation, wind direction, and privacy of residents.
- Use durable materials. For the climate in Thailand, preventing long-term maintenance costs.
- Security with CCTV system detects movement and alerts residents and homeowners.





# BOONSIRI ASSETS

## A brief history of Boonsiri Assets

- 10 years of experience developing sales projects in Bangkok. To meet customer needs
- Customers are impressed. Tell others and buy again. Because of quality and service

FOR MORE INFORMATION

[www.boonsiriasset.com](http://www.boonsiriasset.com)





Experience the comfort of a modern-luxury home with a contemporary design, along with an interior space that has been designed to accommodate a variety of uses. Fulfill every happiness, so you can relax to the fullest.

VILLA TYPE A

# VILLA TYPE A



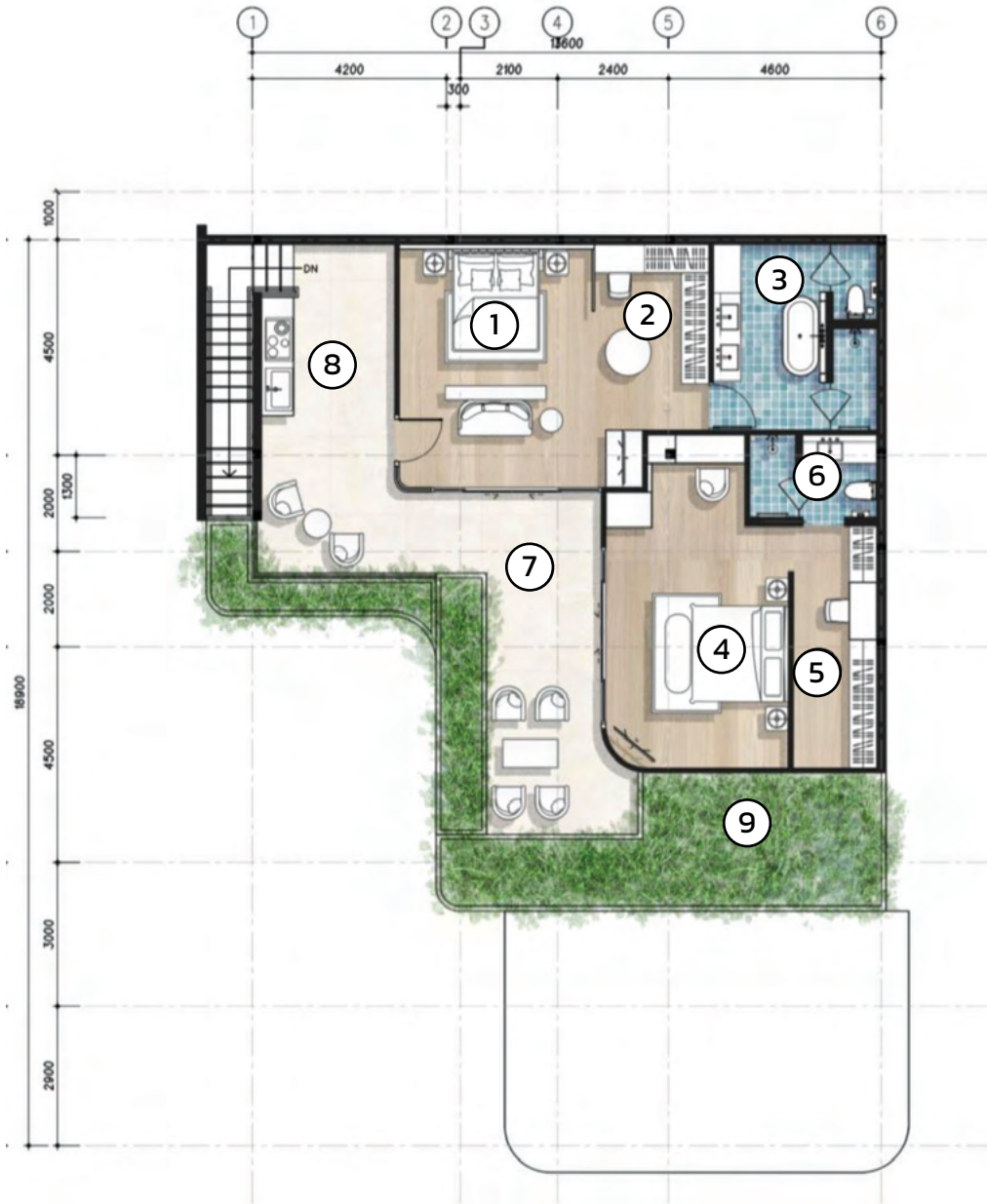
## INTERNAL AREA

1.LIVING ROOM	28 SQ.M.
2.DINING AREA	27 SQ.M.
3.KITCHEN	13 SQ.M.
4.BEDROOM 01	19 SQ.M.
5.DRESSING AREA 01	10 SQ.M.
6.BATHROOM 01	6 SQ.M.
7.BEDROOM 02	19 SQ.M.
8.DRESSING AREA 02	5 SQ.M.
9.BATHROOM 02	9 SQ.M.
10.LAUNDRY ROOM	5 SQ.M.
11.POWDER ROOM	5 SQ.M.
12.STAIRS	8 SQ.M.

## EXTERNAL AREA

13.PARKING	41 SQ.M.
14.SWIMMING POOL	41 SQ.M.
15.POOL TERRACE	39 SQ.M.
16.PUMP ROOM	3 SQ.M.
17.TERRACE	7 SQ.M.

# VILLA TYPE A



## INTERNAL AREA

1.BEDROOM 03	25 SQ.M.
2.DRESSING AREA 03	10 SQ.M.
3.BATHROOM 03	15 SQ.M.
4.BEDROOM 04	26 SQ.M.
5.DRESSING AREA 04	11 SQ.M.
6.BATHROOM 04	6 SQ.M.
TOTAL	93 SQ.M

## EXTERNAL AREA

7.BACONY	30 SQ.M.
8.PANTRY OUTDOOR	14 SQ.M.
9.GARDEN	34 SQ.M.
TOTAL	78 SQ.M.

USABLE AREA 456 SQ.M.



SIERRA VISTA

VILLA TYPE A FLOOR 1





SIERRA VISTA

VILLA TYPE A EXTERIOR



SIERRA VISTA

VILLA TYPE A EXTERIOR







SIERRA VISTA

VILLA TYPE A INTERIOR

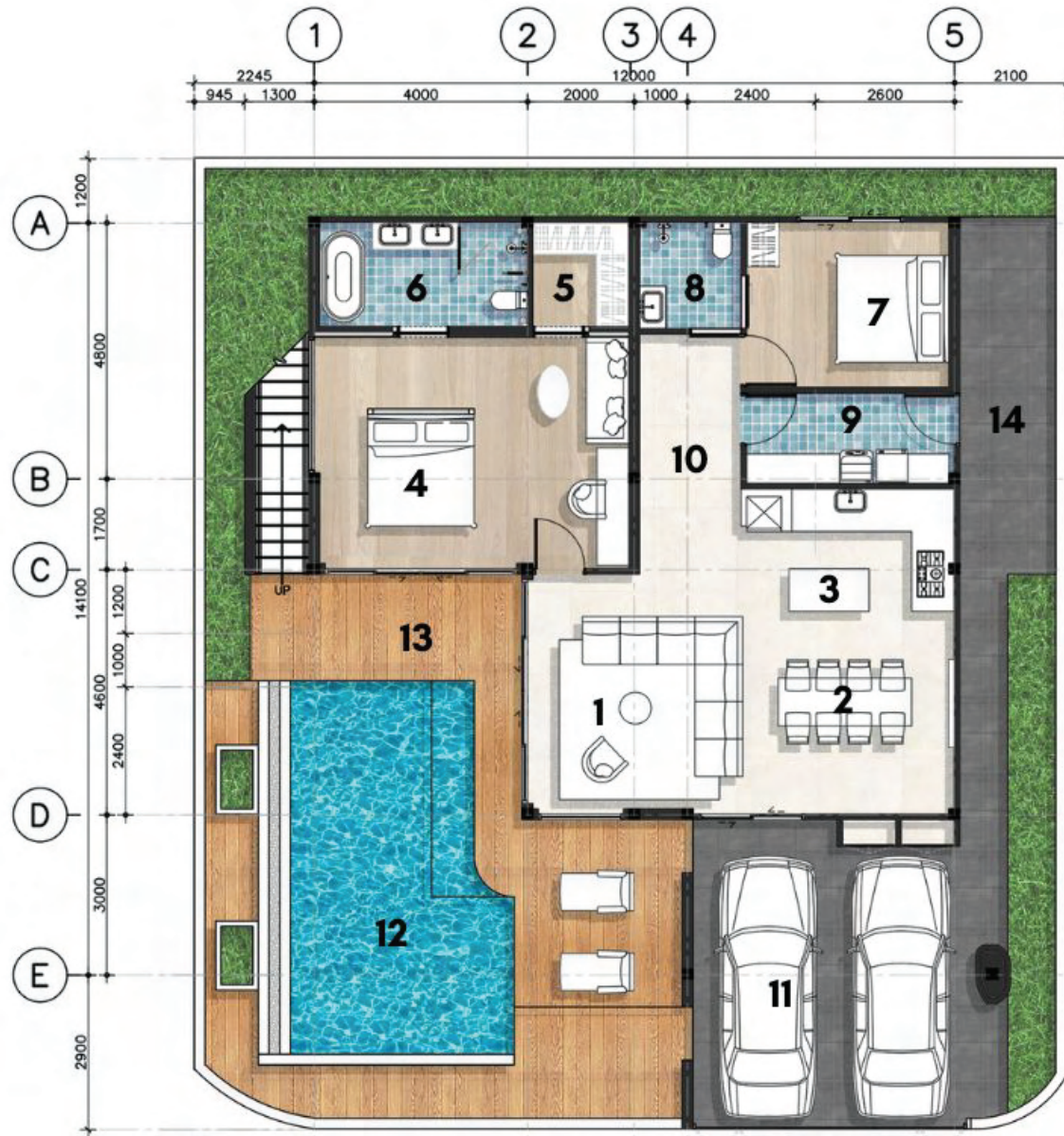




An area designed to provide every angle with a view of the surrounding nature, so you can enjoy a first-class relaxation experience every day, amidst the waves of the sea. The colors and waves, the aesthetics of relaxation, surrounded by amenities that will generate profit for you.

VILLA TYPE B

# VILLA TYPE B



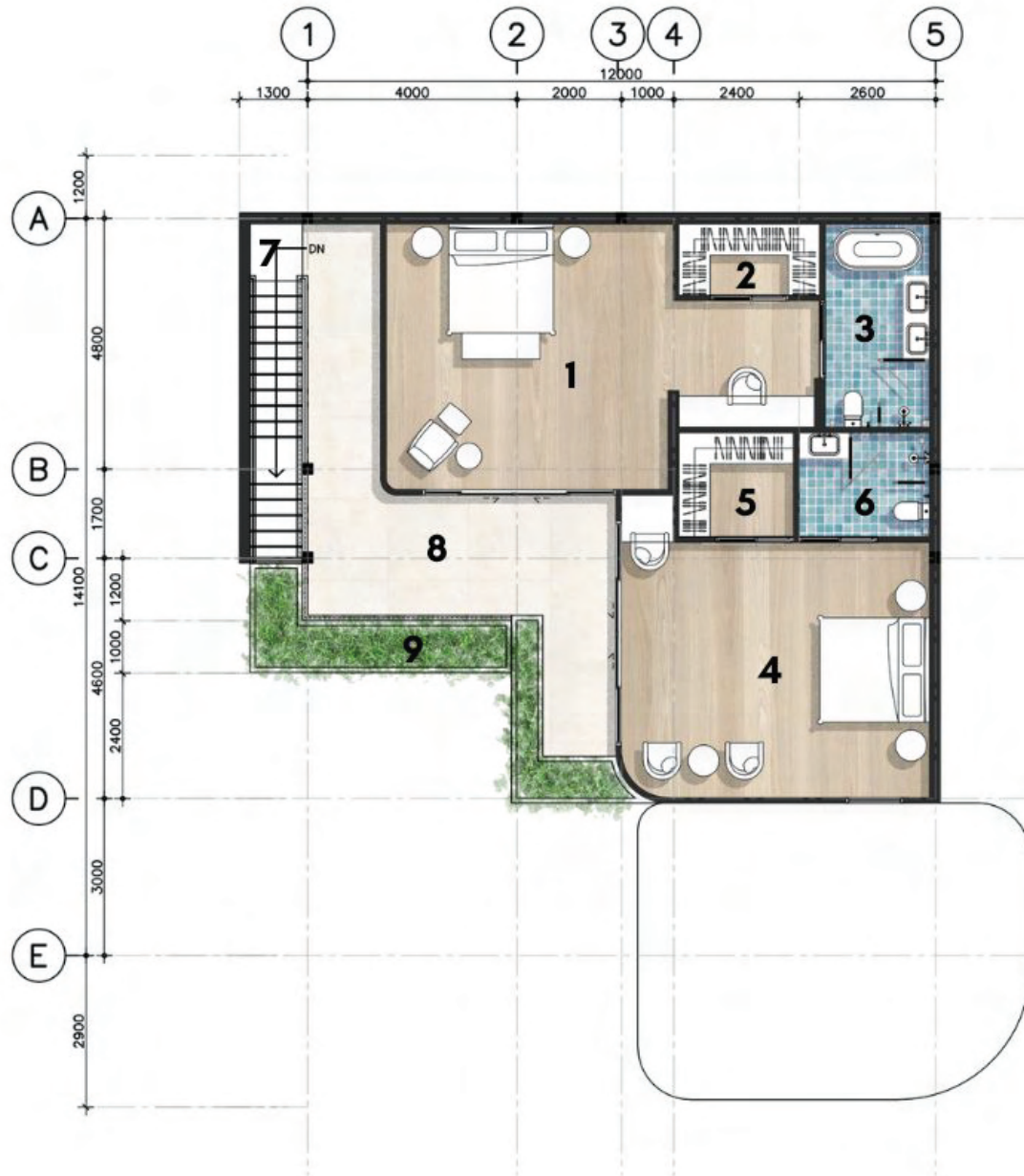
## INTERNAL AREA

1.LIVING ROOM	18 SQ.M.
2.DINING AREA	15 SQ.M.
3.KITCHEN	9 SQ.M.
4.BEDROOM 01	26 SQ.M.
5.DRESSING AREA 01	4 SQ.M.
6.BATHROOM 01	9 SQ.M.
7.BEDROOM 02	12 SQ.M.
8.BATHROOM 02	4 SQ.M.
9.LAUNDRY ROOM	8 SQ.M.
10.FORYER	9 SQ.M.

## EXTERNAL AREA

11.PARKING	34 SQ.M.
12.SWIMMING POOL	32 SQ.M.
13.POOL TERRACE	48 SQ.M.
14.TERRACE	17 SQ.M.

# VILLA TYPE B



## INTERNAL AREA

1.BEDROOM 03	37 SQ.M.
2.DRESSING AREA 03	5 SQ.M.
3.BATHROOM 03	9 SQ.M.
4.BEDROOM 04	32 SQ.M.
5.DRESSING AREA 04	5 SQ.M.
6.BATHROOM 04	5 SQ.M.
7.STAIRS	9 SQ.M.

## EXTERNAL AREA

8.BACONY	25 SQ.M.
9.GARDEN	14 SQ.M.
TOTAL	39 SQ.M.

USABLE AREA 386 SQ.M.







SIERRA VISTA

VILLA TYPE B EXTERIOR



SIERRA VISTA

VILLA TYPE B EXTERIOR









## INTERIOR DESIGN CONCEPT

**T**he Sierra Vista project focuses on designing the functionality of every space, allowing the residents to live their lives simply and perfectly, while still maintaining a distinctive design that reflects their personality in every perspective, along with innovations that help complete every moment of happiness to make it even more perfect.

**W**e believe that designing functions that take into account the actual usage of the residents can better meet their lifestyle needs, so we have designed various functions and combined them with new innovations to make your lifestyle more convenient every day.

**T**he common area is designed to accommodate a variety of activities very well, with a large space to accommodate every member of the family. The private bedroom clearly separates privacy, and the design and amenities in the bedroom are like a 5-star hotel. More happiness with a perfect life in a tropical modern luxury style. Bathrooms are designed and selected with quality and practical sanitary ware that has a long service life, combined with a distinctive and beautiful design.



## LIVE LUXURY LIFE

### Living near the city

Life in a potential location just 5 minutes from the community mall

### Living next to nature

Life is at one with nature with the design concept of a house surrounded by nature to truly complete every relaxation.

### Live life balance

A balanced life that fulfills every need with the design of functions within the house, along with various innovations for a simple and convenient life for everyone.



**Sierra Vista**, a luxurious pool villa in the Bang Tao zone of Phuket Province, is a worthwhile investment for both residents and investors. Phuket is become a world-renowned resort destination, notwithstanding its previous status as a tourist destination to enjoy the beauty of the sandy beaches and sea. However, Phuket is now considered a second home for tourists. The Phuket Sandbox government has provided continuous support. Tourists take many different forms. Both for travel and relaxation with family. Like a couple or a young teen. This includes coming for long-term residence, such as Long Stay.

**SIERRA VISTA**

# SIERRA VISTA MATERIALS SPECIFICATION

SIERRA VISTA



## STRUCTURE

Reinforced concrete for footings, slabs and beams.



## ROOF

Galvanize steel structure  
High quality asphalt shingle roof.



## EXTERNAL & INTERNAL WALL

Brick wall, smooth plaster, painted  
Bio-wood wood facade.



## CEILING

Gypsum board ceiling with painted smooth plaster and painted finish  
Step Ceiling with lighting.



## DOORS & WINDOWS

Teak wood door, 2.40 m. high  
Aluminum frames and a powder coat finish, featuring clear glass exterior door and standard window.



## SWIMMING POOL

Approximately depth 1.30 m  
Overflow system  
Salt chlorinator system with pool pump and sand filter.



## GARDEN

Tropical garden



## SURROUNDING WALL

Blockwall for privacy and security, with sliding gate and main entrance.



## LIVING & KITCHEN AREA

Ceramic 60X120 floor tiles  
Generous ceiling height of 2.90-3.00 meters  
Modern kitchen with an island, including hob, hood, oven, microwave, sink and washing machine.



## BEDROOMS

Vinyl wood floor, Herringbone



## BATHROOMS

Ceramic floor and wall tiles  
Marble countertops  
HAFALE, Jaquar or equivalent sinks, toilet and fixture  
Included bathroom accessories  
Bathtub for 3 bathrooms  
Water boiler 100 liters



## GARAGE & ROOF TERRACE

Concrete Floor  
PUMP RM.  
Concrete polishing floor



## STAIRCASET

SCG wood



## ELECTRICAL SYSTEM

Panasonic and Haco or equivalent switches and plugs  
Automatic digital meter.



## PEST CONTROL SYSTEM

Pipes for chemicals built into the foundation



## WATER SUPPLY

Water meter for every villa  
Septic tanks wastewater  
Water pump  
Water tank  
Surge tank



## AIR CONDITIONING

Carrier Air conditioning units  
in living room and bedrooms with remote control.



## SMART HOME TECHNOLOGY

Automated gate  
Digital door lock for main door

# SIERRA VISTA

# BUILD-IN FURNITURE LIST

SIERRA VISTA



## FIRST FLOOR PLAN

LIVING ROOM  
TV shelf  
TV wall panel  
Cabinet



## KITCHEN

Counter kitchen  
Island kitchen  
Including, hood, and sink



## POWDER ROOM

Basin counter with cabinet  
mirror



## BEDROOM 1

Dressing table with mirror  
Headboard  
Bathroom counter with cabinet  
Bathroom mirror



## BEDROOM 2

Wardrobe  
Dressing table with mirror  
Headboard  
Bathroom counter with cabinet  
Bathroom mirror



## SECOND FLOOR PLAN

### MASTER BEDROOM

Walk in closet with wall mirror  
Dressing table  
Headboard  
His and her bathroom counter with cabinet  
Bathroom mirrors



## BEDROOM 4

Wardrobe  
Dressing table with mirror  
Headboard  
Bathroom counter with cabinet  
Bathroom mirror



More projects details:  
[www.sierraphuket.com](http://www.sierraphuket.com)



**SIERRA VISTA**

Luxury pool villas

Sri Sunthon-Bang Jo